



ALICE H. CHITREVEDOS to Francis deC. Sullivan
Recorded Mar 12 1910 Page 197
17 25 16 21 E

46

Edward Long to Francis deC. Sullivan
Recorded Mar 10 1910 Page 196

47

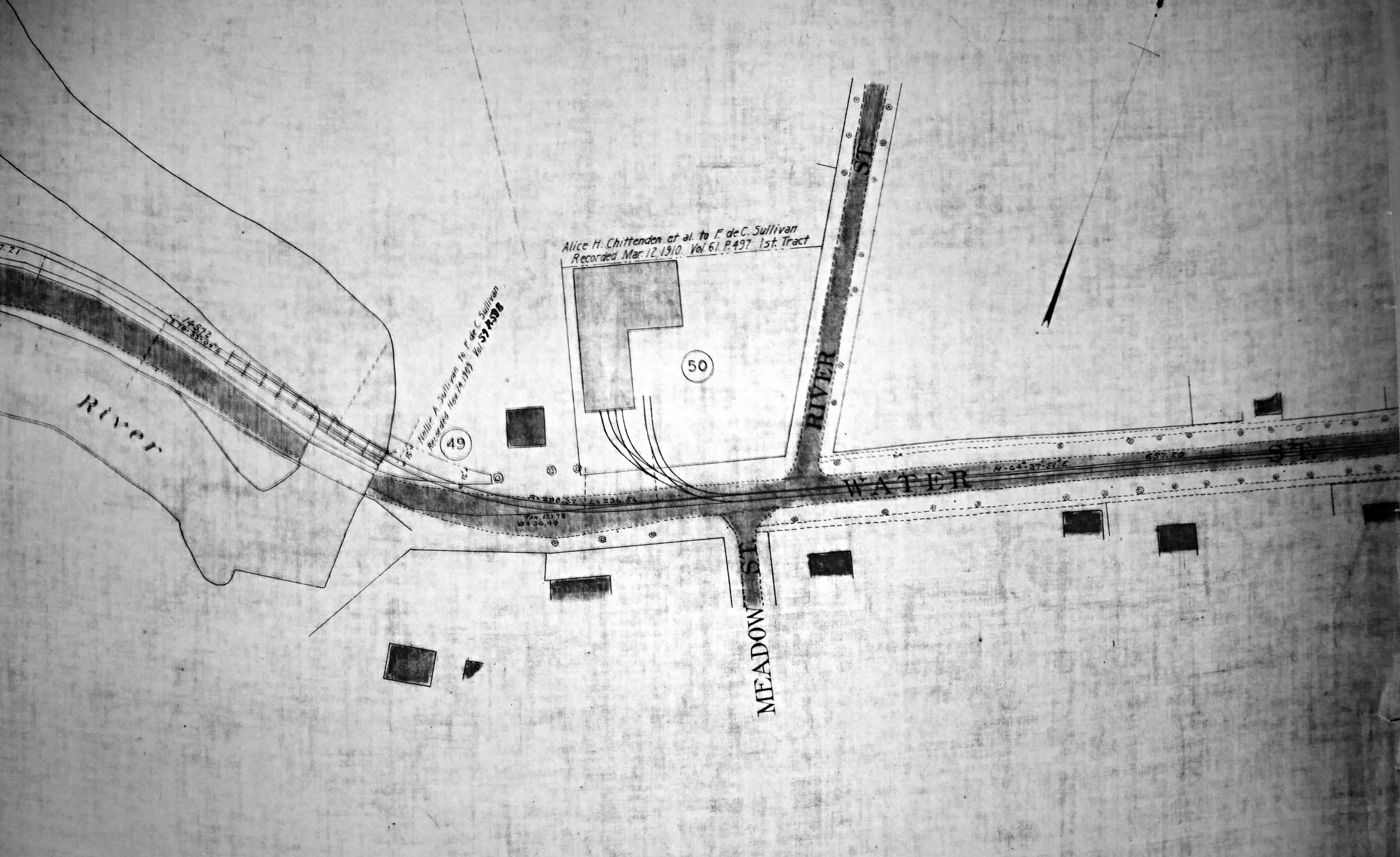
$\Delta = 50^\circ 38' 30''$ $R = 447.68$ $L = 495.63$
 $TAN = 262.39$

$Tan. 2.76$
 $N 33^\circ 35' 51'' E$

Highway

THE SHORE LINE ELECTRIC RAILWAY
GUILFORD, CONN.





Alice H. Chittenden et al. to F. de C. Sullivan
Recorded Mar. 12, 1910. Vol. 61 P. 497 1st Tract

Nellie A. Sullivan to F. de C. Sullivan
Recorded Nov. 24, 1909 Vol. 57 P. 308

50

49

River

RIVER ST

MEADOW ST

WATER

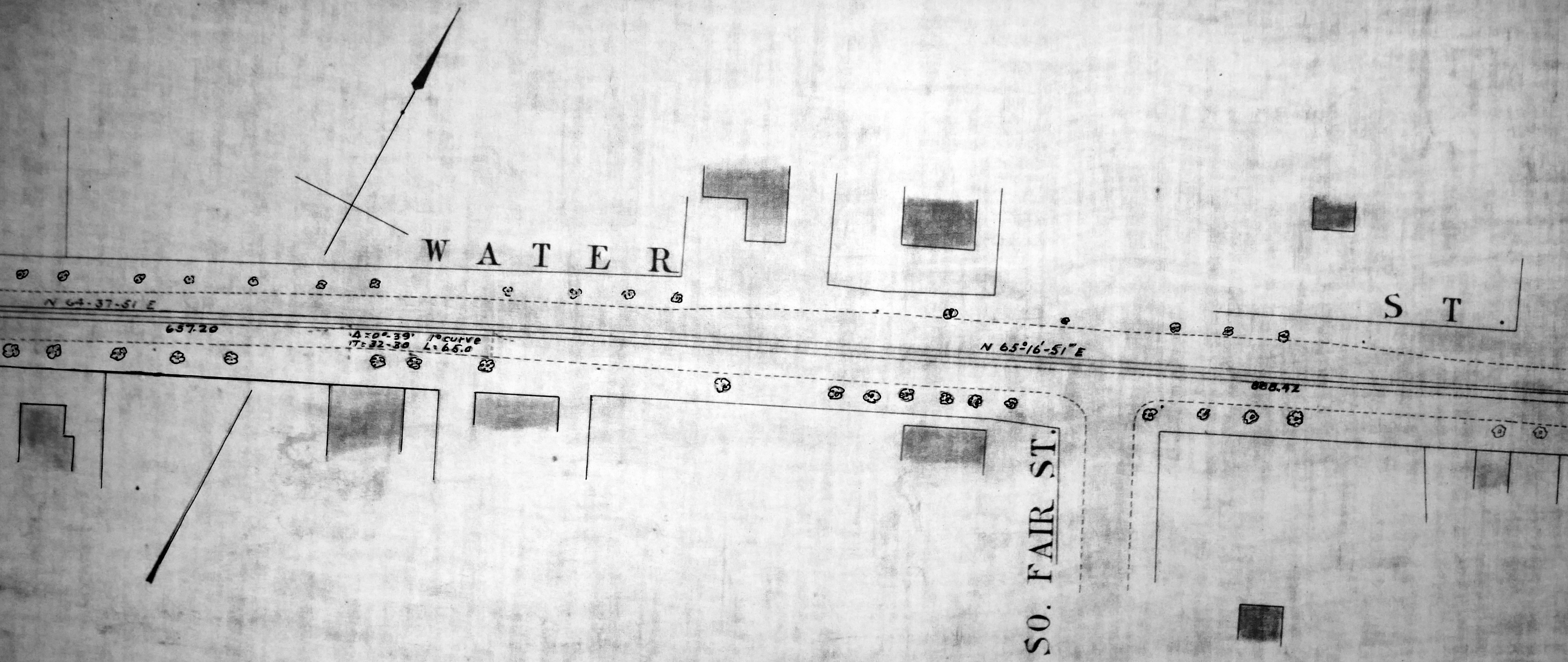
ST.

74° 12' 17" S
131.36.49

81° 28' 57" S
121.236.54

N 64° 37' 51" E

657.22



W A T E R

S T .

SO. FAIR ST.

$\Delta = 0^{\circ} 39' 10''$ 1st CURVE
PT = 32-30 L = 65.0

N 64-37-51 E

N 65-16-51 E

657.20

888.42

SO. FAIR ST.

51° E

888.42

S T .

Hotel

Odd Fellows
Hall

WHITEFIELD ST.

$\Delta = 90^{\circ} 49'$
 $TAN = 69.41$
 $R = 60.0'$

$\Delta = 54^{\circ} 58' 30''$
 $TAN = 39.60$
 $R = 60.0'$
 $L = 73.78$

$N 25^{\circ} 32' 09'' W$
 42.50
 $TAN = 60.37$
 166.46

$\Delta = 85^{\circ} 30' 20''$
 $TAN = 64.0$
 $R = 60.0$
 $D = 69.25$
 $D = 93.28$
 $D = 92^{\circ} 46'$

G u i l f o r d

Hotel



